

Is It Living?

Choose objects (eg: person, dog, shoe, tree, clock), and students go through the grid deciding if the object matches the 'living' criteria.

This item is a paid digital download from Teacher Brain.

It is for use in one classroom only.

This item is bound by copyright laws and redistributing, editing, selling, or posting this item (or any part thereof) on the Internet are all strictly prohibited. You cannot copy, reproduce, alter, modify, create derivative works, publicly display or steal intellectual property of any content from Teacher Brain resources.

Violations are subject to the penalties of the Digital Millennium Copyright Act. They will be investigated, and Teacher Brain shall have the right to take appropriate civil and criminal legal action.

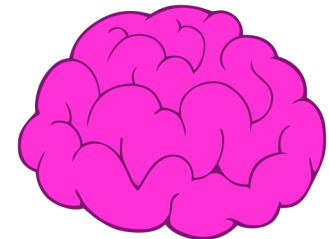
Please note graphics and fonts used in this piece are from: Klara Viskova clipart, Graphics Factory, 1001 Free Fonts and School Fonts.

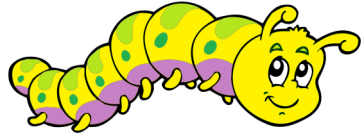
For many more resources, great prices and subscriptions, visit:

<http://www.teacherbrain.com.au>

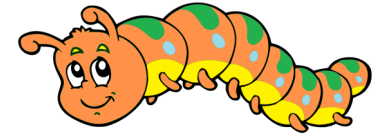
Follow us on Facebook!

Thank you, and enjoy your download!

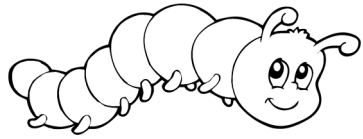




Is It Living?



Object	Does it breathe?	Does it grow and change?	Does it move by itself?	Does it need food and water?	Does it reproduce?



Is It Living?



Object	Does it breathe?	Does it grow and change?	Does it move by itself?	Does it need food and water?	Does it reproduce?

